

MODEL # VIAP-R-SC-SWITCH-VFC-RC

SPECIFICATIONS

Assisted service/self-service refrigerated display case (Slide In) with tempered safety glass; showcase with switch function for fast switch-over between cold and hot operation flip of a switch to change from refrigerated air over pan to a heated unit and heating plate with black glass display can be folded up for cleaning; speed-controlled fans in low voltage; electronic control with digital temperature display; fully automatic defrosting; interior lighting in combination with heat bridge, glass top LIGHT, operator side: open; customer side: unique pivot system gives the option for self serve or operator serve height-adjustable base decks; refrigerated forced-air refrigeration storage in compressor compartment; floor drain required.

Available lengths: 59 1/2" 72 1/4"
Available depths: 35 3/4"
Available heights: 52 3/4"



STANDARD FEATURES

- Self-Contained Refrigeration
- 304 Stainless Steel Exterior
- Easy-Change system
(optionally open or closed front glass)
- Height-adjustable base decks
- Base with rear ventilation
- Service side ambient storage shelf
- VIAP3 Has (1) Refrigerated Door
- VIAP4 Has (2) Refrigerated Door
- Service side cutting board with finger holes only outside and length entirely along slide in frame
- Air-dam with price tag
- Side ends with radius rounded down
- Floor drain required
- Digital temperature display
- Forced air cooling
- Removable rear sliding doors
- 5 year compressor warranty
- ETL listed in accordance with UL 471 and NSF 7 standards
- ETL listed in accordance with UL 197 and NSF 4 standards

OPTIONAL FEATURES

- Powder Coat Finish (contact factory)

MODEL	L	D	H	AMPS	VOLT	PLUG	WT	REFRIG.
VIAP3-R-SC-SWITCH-VFC-RC	59 1/2"	35 3/4"	52 3/4"	1x12 1x5	115 208-230V 4 wire	5-15P L-14-20P	675	R448A
VIAP4-R-SC-SWITCH-VFC-RC	72 1/4"	35 3/4"	52 3/4"	1x14 1x5	115 208-230V 4 wire	5-20P L-14-20P	815	R448A



Conforms to UL Standard 197, and NSF Standard 4; Certified To CSA Standard C22.2 No.109

Conforms to UL Standard 471, and NSF Standard 7; Certified To CSA Standard C22.2 No.120

CALL TOLL FREE: 800-525-3692 (609-714-2330)

FAX: 609-714-2331 www.rpiindustries.com

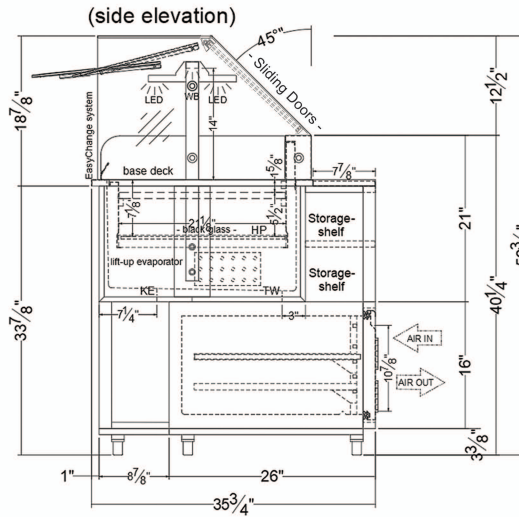
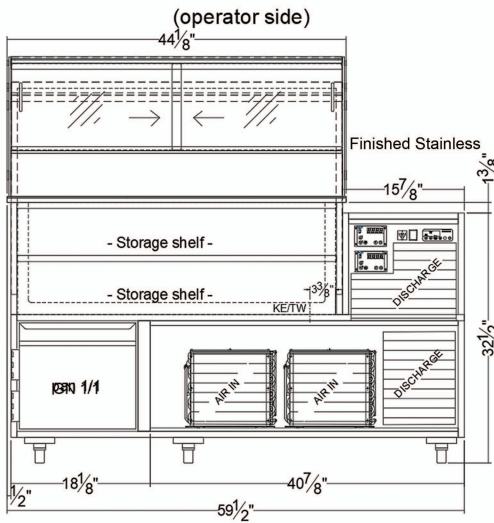
220 ROUTE 70, MEDFORD, NJ 08055

RPI INDUSTRIES, INC. v6_13_24

COLD VARIO AIR PAN SWITCH

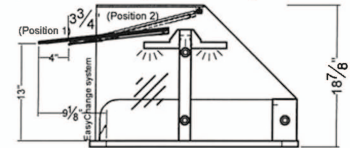
MODEL # VIAP3-R-SC-SWITCH-VFC-RC

PROJECT:
TOLL FREE: 800-525-3692

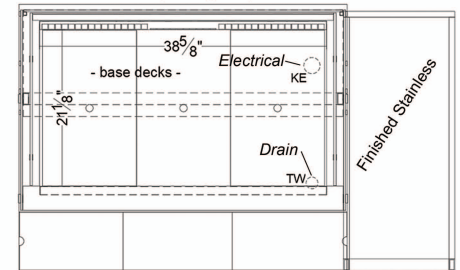


Detail EasyChange system USA

- * Position 1: USA NSF position for self-service
- * Position 2: Cleaning position - front glass slid in

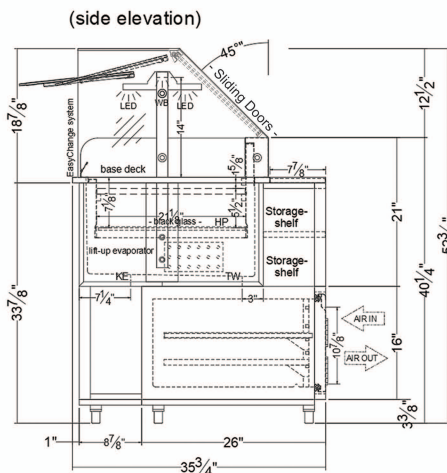
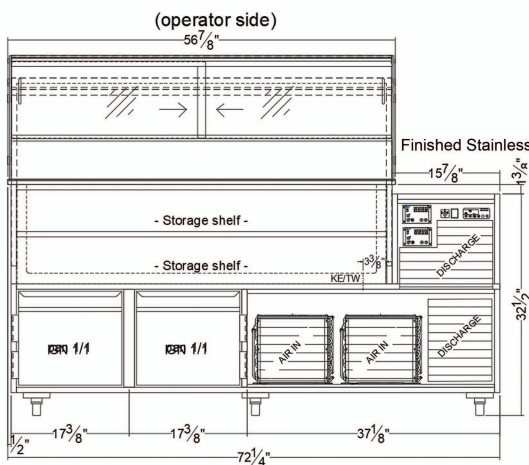


(floor plan)

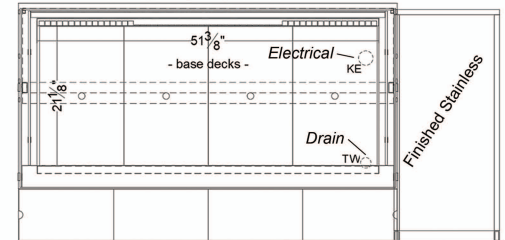


Electrical & Plumbing locations

VIAP4-R-SC-SWITCH-VFC-RC



(floor plan)



Electrical & Plumbing locations

1. A 1 1/8" diameter drain is provided. The drain **MUST** be connected to a floor drain or storage container **AT TIME OF INSTALLATION**.
2. Ventilation louvers **MUST** be provided in the cabinet or counter and located so to provide full ventilation for the condensing unit. Refrigeration system is designed to flow from rear to front. Unobstructed air flow **MUST** be maintained to ensure unit performance and maintain warranty.
3. The VIAP SWITCH merchandiser is designed for use in locations where temperatures and humidity do not exceed 75 degrees and 55% R.H. Locate away from direct sunlight, rapid air currents and extreme temperature changes. Exposure to air currents from ceiling fans, air conditioners, ovens, etc. will disrupt the cases air current and refrigeration zone within. Any adverse field conditions stated above will void warranty.

RPI in line with it's policy to continually improve it's product reserves the right to change materials and specifications without notice.

CALL TOLL FREE: 800-525-3692 (609-714-2330)

FAX: 609-714-2331 www.rpiindustries.com

220 ROUTE 70, MEDFORD, NJ 08055

RPI INDUSTRIES, INC. v6_13_24