

MODEL # VIAP-R-SC-SWITCH VFC

SPECIFICATIONS

Assisted service/self-service refrigerated display case (Slide In) with tempered safety glass; showcase with switch function for fast switch-over between cold and hot operation flip of a switch to change from refrigerated air over pan to a heated unit and heating plate with black glass display can be folded up for cleaning; speed-controlled fans in low voltage; electronic control with digital temperature display; fully automatic defrosting; interior lighting in combination with heat bridge, glass top LIGHT, operator side: open; customer side: unique pivot system gives the option for self serve or operator serve height-adjustable base decks; floor drain required.

Available lengths: 44 1/8" 56 7/8"
Available depths: 35 3/4"
Available heights: 52 3/4"



STANDARD FEATURES

- Self-Contained Refrigeration
- 304 Stainless Steel Exterior
- Easy-Change system
(optionally open or closed front glass)
- Height-adjustable base decks
- Base with rear ventilation
- Service side ambient storage shelf
- Service side cutting board with finger holes only outside and length entirely along slide in frame
- Air-dam with price tag instead of glass and side ends with radius rounded down
- Floor drain required
- Digital temperature display
- Forced air cooling
- 5 year compressor warranty
- ETL listed in accordance with UL 471 and NSF 7 standards
- ETL listed in accordance with UL 197 and NSF 4 standards

OPTIONAL FEATURES

- Powder Coat Finish (contact factory)

MODEL	L	D	H	AMPS	VOLT	PLUG	WT	REFRIG.
VIAP3-R-SC-SWITCH VFC	44 1/8"	35 3/4"	52 3/4"	12	115/208-230V	4 wire L14-20P	560	R448A
VIAP4-0-R-SC-SWITCH VFC	56 7/8"	35 3/4"	52 3/4"	14	115/208-230V	4 wire L14-20P	755	R448A



Conforms to UL Standard 197, and NSF Standard 4; Certified To CSA Standard C22.2 No.109

Conforms to UL Standard 471, and NSF Standard 7; Certified To CSA Standard C22.2 No.120

CALL TOLL FREE: 800-525-3692 (609-714-2330)

FAX: 609-714-2331 www.rpiindustries.com

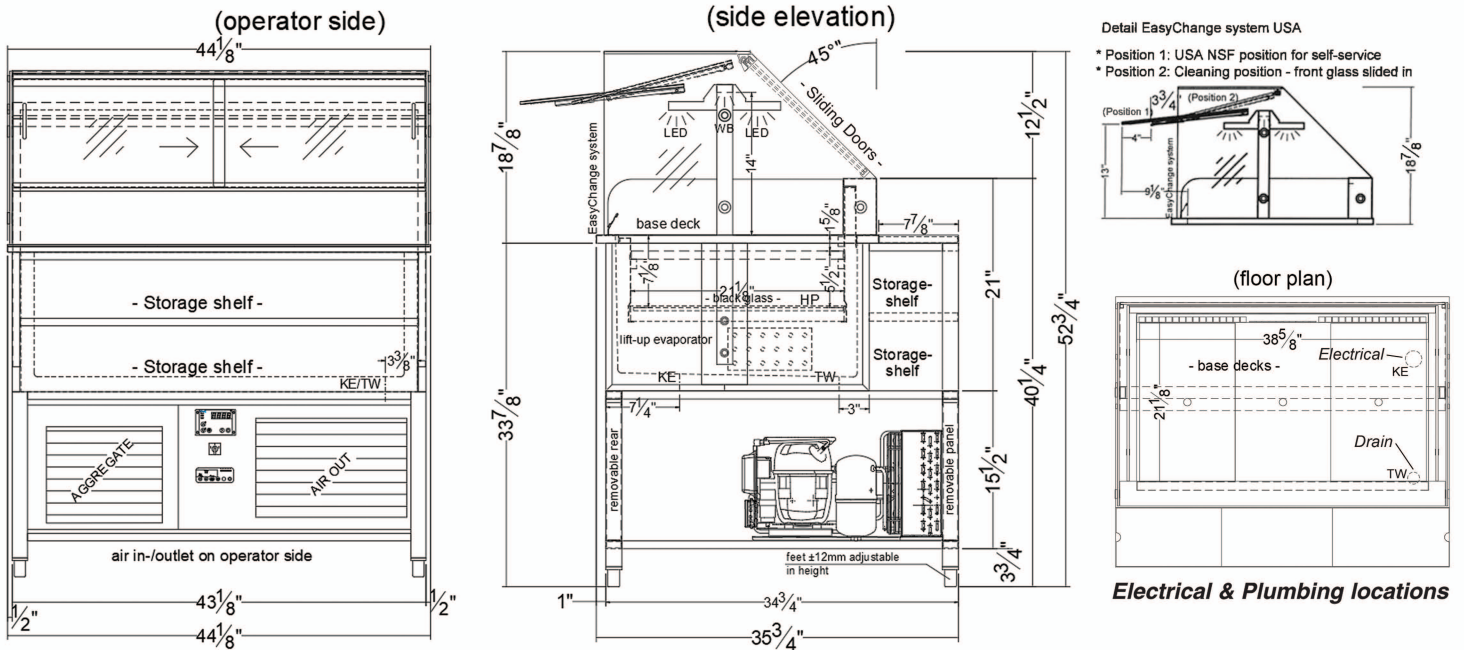
220 ROUTE 70, MEDFORD, NJ 08055

RPI INDUSTRIES, INC. v6_13_24

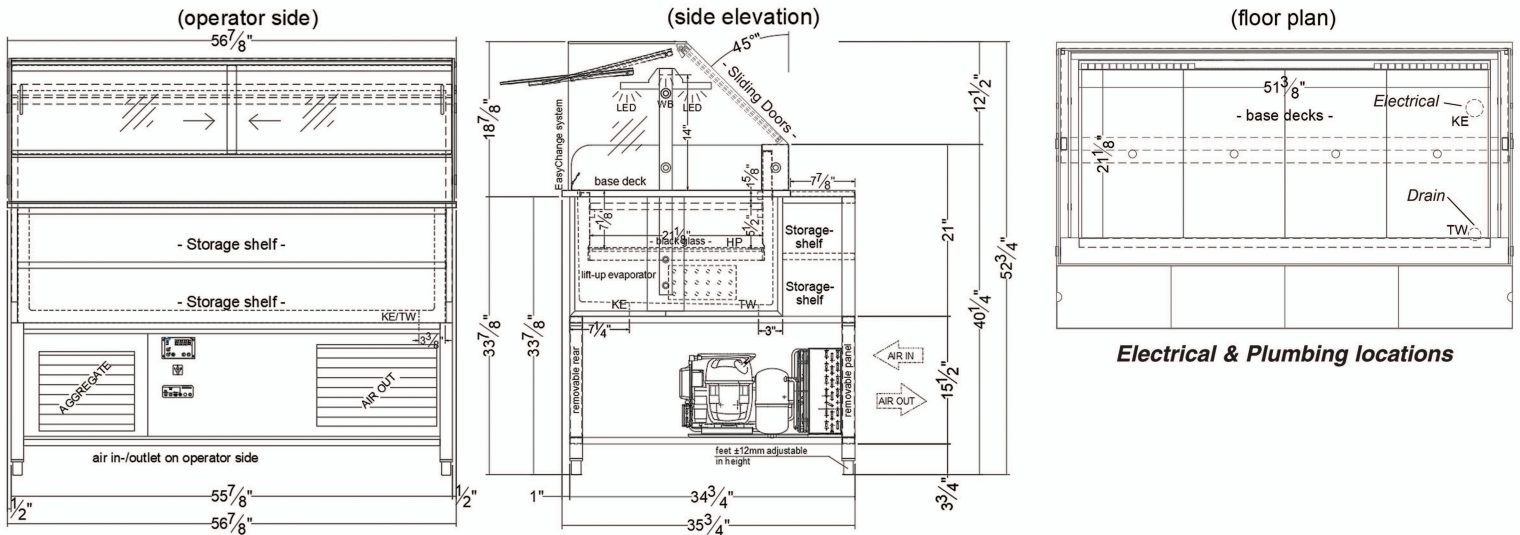
VARIO AIR PAN SWITCH

MODEL # VIAP3-R-SC-SWITCH-VFC

PROJECT:
TOLL FREE: 800-525-3692



VIAP4-0-R-SC-SWITCH VFC



1. A 1 1/8" diameter drain is provided. The drain **MUST** be connected to a floor drain or storage container **AT TIME OF INSTALLATION**.
2. Ventilation louvers **MUST** be provided in the cabinet or counter and located so to provide full ventilation for the condensing unit. Refrigeration system is deigned to flow from rear to front. Unobstructed air flow **MUST** be maintained to ensure unit performance and maintain warranty.
3. The VIAP SWITCH merchandiser is designed for use in locations where temperatures and humidity do not exceed 75 degrees and 55% R.H. Locate away from direct sunlight, rapid air currents and extreme temperature changes. Exposure to air currents from ceiling fans, air conditioners, ovens, etc. will disrupt the cases air current and refrigeration zone within. Any adverse field conditions stated above will void warranty.

RPI in line with it's policy to continually improve it's product reserves the right to change materials and specifications without notice.

CALL TOLL FREE: 800-525-3692 (609-714-2330)

FAX: 609-714-2331 www.rpiindustries.com

220 ROUTE 70, MEDFORD, NJ 08055

RPI INDUSTRIES, INC. v6_13_24