

# CONTINENTAL - UNDER COUNTER (NARROW)

PROJECT: \_\_\_\_\_  
ITEM: \_\_\_\_\_ QUANTITY: \_\_\_\_\_

## MODEL # SCCB-CD-UC-NW

### SPECIFICATIONS

The Continental SCCB-CD-UC-NW Narrow Series is a self contained, refrigerated under-counter, rear breathing grab & go display. Unit is available with LED top canopy light, mirror aluminum interior ends, perforated stainless steel interior back panel and stainless steel deck with hemmed edges to contain spills. The deck pan is also removable, allowing for easy cleaning. The exterior of the display is available with a choice of standard-grade plastic laminates.

Available lengths:  36"  48"  60"  72"

Available depths:  32 3/8"

Available heights:  32 3/4"



### STANDARD FEATURES

- Self-Contained Refrigeration
- Standard Grade Laminate Exterior
- Mirror Aluminum interior ends
- Black Base
- Refrigerated Self-Service
- LED Top Canopy Light
- Stainless Steel Perforated Interior Back Panel
- Removable Stainless Steel Deck Pan(s) with Hemmed Edge to Contain Spills
- Thermometer
- 8' Cord and Plug
- ETL Listed in Accordance with UL 471 and NSF 7 Standards
- Environmentally Safe Refrigerant
- 1 Year Parts and Labor Warranty
- Electric Condensate Evap Pan
- Black laminate finished back with black air grill
- Includes mobile caster and leg leveler
- 5 Year Compressor Warranty

### OPTIONAL FEATURES

- Remote Refrigeration
- Stainless Steel Exterior Finish
  - #4  #6  #8
- Special Laminates
- Wood Veneers (Unfinished)
- Wood Veneers (Stained & Sealed)
- Miscellaneous Trim
- Black Styrene Step Sham 2" / 4" High x 18" Deep
- Stainless Steel Step Sham 2" / 4" High x 18" Deep
- Powder Coated Interior Back Panel and Hardware
  - Black  White
- Mirrored Polished Stainless Steel Interior Ends (#8 Finish)
- Mirrored Polished Stainless Steel Interior Back Panel (#8 Finish)
- Pull Down #23 Econo Frost Night Curtain
- Removable Locking Security Panels
- Finished Back Special Laminates Black Grill
- Finished Back Stainless Steel With Stainless Grill

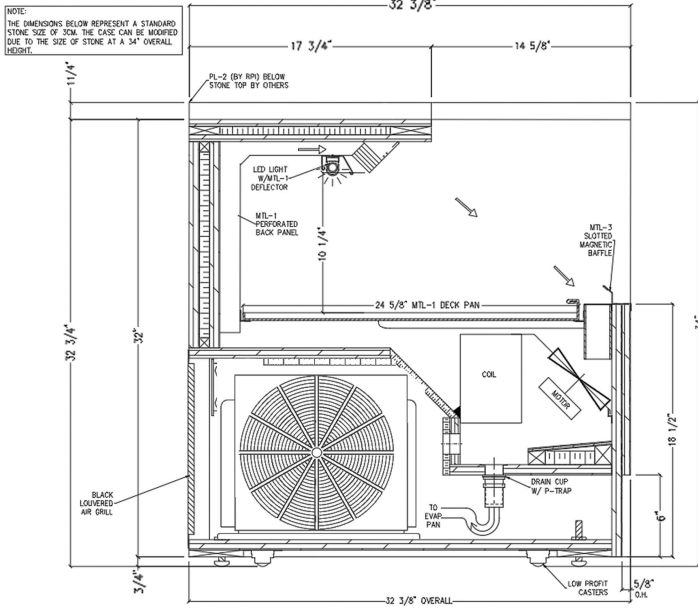
CALL TOLL FREE: 800-525-3692 (609-714-2330)

FAX: 609-714-2331 [www.rpiindustries.com](http://www.rpiindustries.com)

220 ROUTE 70, MEDFORD, NJ 08055

    
**RPI INDUSTRIES, INC.** v9\_18\_24

## MODEL # SCCB-CD-UC-NW



SCCB-CD-UC-NW

### SELF - CONTAINED

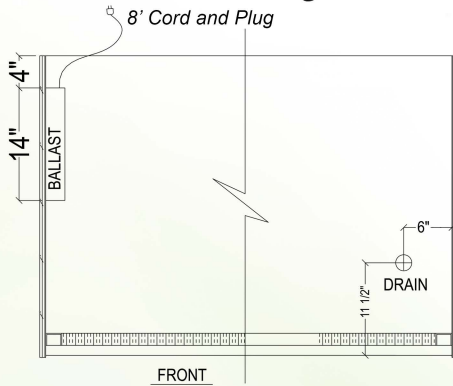
MODEL	L	D	H	HP	VOLT	AMP	PLUG	WT	REFRIG.
SCCB36R-CD-UC-NW	36	32 3/8"	32 3/4	1/2	(1x) 115 (1x) 115	15.1 8.9	5-20P 5-15P	700	134A
SCCB48R-CD-UC-NW	48	32 3/8"	32 3/4	1/2	(1x) 115 (1x) 115	15.1 8.9	5-20P 5-15P	800	134A
SCCB60R-CD-UC-NW	60	32 3/8"	32 3/4	3/4	115/208-230	14.0	L14-20P	925	404A
SCCB72R-CD-UC-NW	72	32 3/8"	32 3/4	3/4	115/208-230	14.5	L14-20P	1100	404A

### REMOTE - REFRIGERATED

MODEL	BTU @20 F	VOLT	AMP	PLUG	WT	REFRIG.
SCCB36R-CD-RR-UC-NW	3910	115	10.6	5-15P	600	Verify
SCCB48R-CD-RR-UC-NW	3910	115	10.6	5-15P	750	Verify
SCCB60R-CD-RR-UC-NW	7470	115	10.6	5-15P	875	Verify
SCCB72R-CD-RR-UC-NW	7470	115	11.1	5-15P	1000	Verify

\* All electric requirements include condensate evaporator pan.  
\* 448a refrigeration available at no additional cost - please specify

### Electrical & Plumbing locations



Conforms to UL Standard 471,  
and NSF Standard 7; Certified  
To CSA Standard C22.2 No.120



RPI refrigerated merchandisers configured for sale for use in the United States meet or surpass the requirements of the DOE 2017 energy efficiency standards