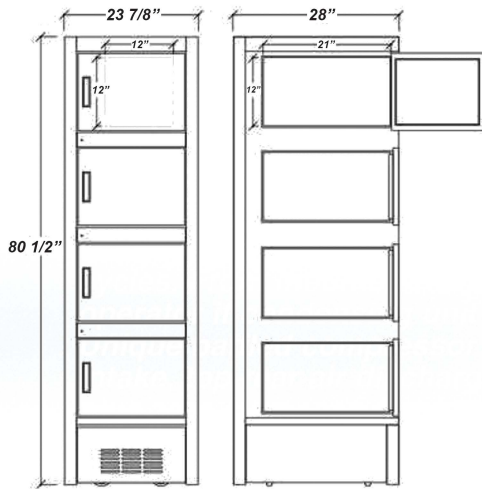
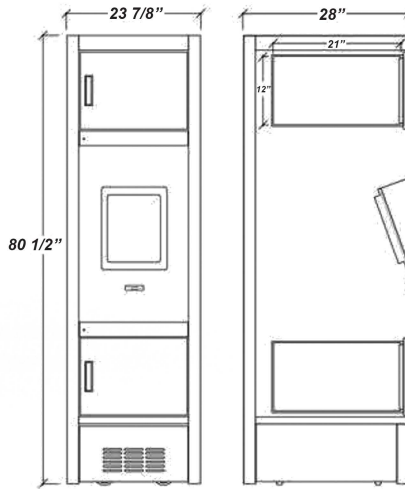


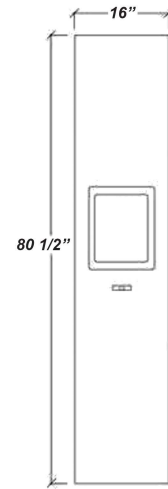
ONDO TEMPERATURE-CONTROLLED FOOD LOCKER SYSTEM 12"x12"



Module 1
4-Locker Column



Module 2
2-Locker Column with
Touchscreen & Scanner Embedded



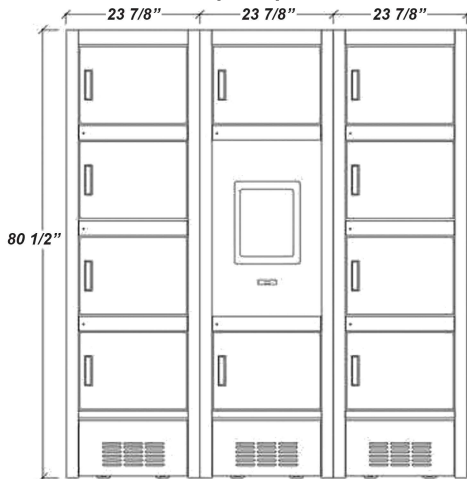
Module 3
Dedicated Column to House
Touchscreen & Scanner

Model Nomenclature 12x12 (Q-C₁C₂...C_n) T-DUL

Variable	Q	C ₁	C ₂	...C _n	T	D	U	L
Description	Total Quantity of Lockers	Module in 1st Column	Module in 2nd Column	Remainder of the configuration	Temperature Control Option	Door Option	Unlock Option	Loading
Options		1, 2, or 3	1, 2, or 3	1, 2, or 3	Convertible [CONV] Ambient Insulated [AI] Hot Only [H], Cold Only [C] Split - hot/cold [SPL]. Ambient [A]	Glass [G] or Solid [S]	Spring-loaded [S] or Motorized [M]	Front [F] or Rear [R]

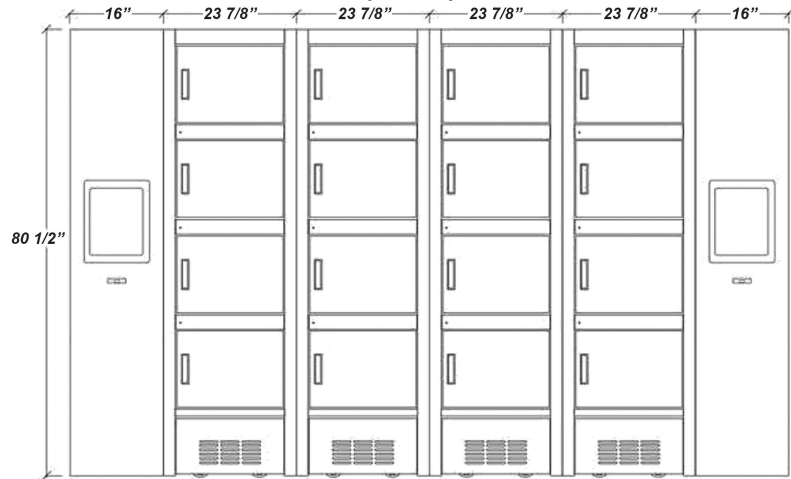
Example Configuration 1

Module 1, 2, and 3
12x12 [10 - 121] CONV-SSF



Example Configuration 2

Module 3 + Module 1x4 + Module 3
12x12 [16-311113] CONV-SSF



	Electrical	NEMA	Plug Qty
AI (up to 24 cubes)	115 VAC, 20 amp, Single Phase	5-20P	1 plug per bank
AI (24 to 30 cubes)	115/208-230 VAC, 20 amp, Single Phase	L14-20P	1 plug per bank
CONV (1 column)	115/208-230 VAC, 20 amp, Single Phase	L14-20P	1 plug per column (module 1 or 2)
H or V (1 column)	115/208-230 VAC, 20 amp, Single Phase	L14-20P	1 plug per column (module 1 or 2)
SPL (1 column)	115/208-230 VAC, 20 amp, Single Phase	L14-20P	1 plug per column (module 1 or 2)

Internal Compartment Dimensions

Temp Control	Width	Height	Depth (Front Load)	Depth (Pass-thru)
AI	12-3/8"	11-7/8"	21"	24-1/4"
CONV	9-7/8"	11-7/8"	21"	24-1/4"
H	11-1/4"	11-7/8"	21"	24-1/4"
C	11"	11-7/8"	21"	24-1/4"
SPL	Consult Factory			

Overall Column Dimensions

Module	Width	Height	Depth	Weight
Module 1	23-7/8"	80-1/2"	28"	350 lbs
Module 2	23-7/8"	80-1/2"	28"	300 lbs
Module 3	16"	80-1/2"	28"	200 lbs

*Weights are nominal. Depending on options and exact configuration, this may vary.



Note:
Columns with temperature control (hot/cold/convertible) require individual power connections for each column. Ambient insulated and non-insulated require 1 power connection for the entire bank, up to 30 total lockers. The NEMA plugs are provided and will be coming out of the top of the bank(s). Each user interface requires an ethernet connection to the internet.

Warranties:

1 year limited parts and labor
5 year compressor warranty

CALL TOLL FREE: 800-525-3692 (609-714-2330)

FAX: 609-714-2331 www.rpiindustries.com

220 ROUTE 70, MEDFORD, NJ 08055



The ONDO merchandiser is designed for use in stores where ambient temperature and humidity do not exceed 80 Degrees Fahrenheit and 60% R.H. Locker system is designed for holding pre-chilled or pre-heated products within appropriate locker temperature settings.

RPI in line with its policy to continually improve its products, reserves the right to change materials and specifications without notice.