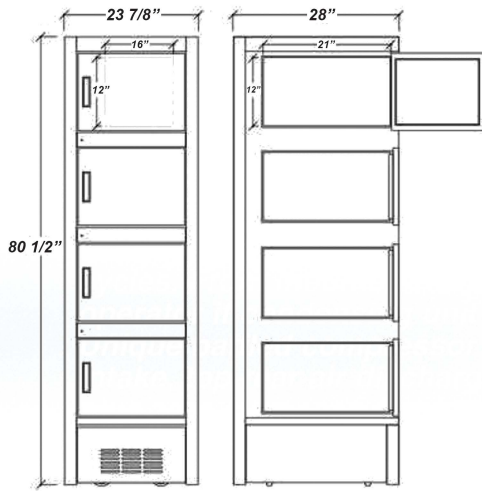
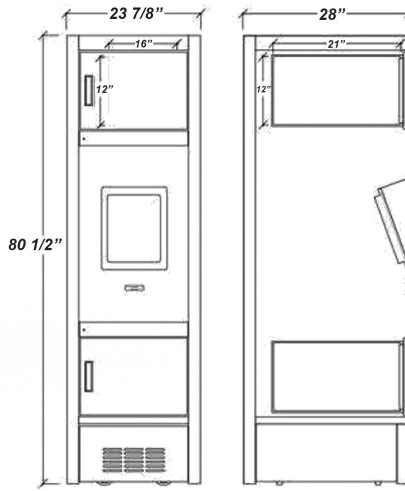


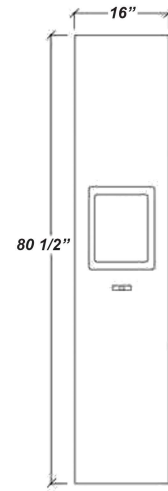
# ONDO TEMPERATURE-CONTROLLED FOOD LOCKER SYSTEM 12"x16"



**Module 1**  
4-Locker Column



**Module 2**  
2-Locker Column with  
Touchscreen & Scanner Embedded



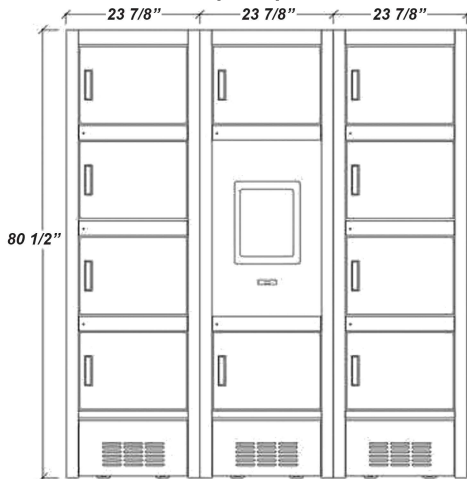
**Module 3**  
Dedicated Column to House  
Touchscreen & Scanner

## Model Nomenclature 12x12 (Q-C<sub>1</sub>C<sub>2</sub>...C<sub>n</sub>) T-DUL

Variable	Q	C <sub>1</sub>	C <sub>2</sub>	...C <sub>n</sub>	T	D	U	L
<b>Description</b>	Total Quantity of Lockers	Module in 1st Column	Module in 2nd Column	Remainder of the configuration	Temperature Control Option	Door Option	Unlock Option	Loading
<b>Options</b>		1, 2, or 3	1, 2, or 3	1, 2, or 3	Convertible [CONV] Ambient Insulated [AI] Hot Only [H], Cold Only [C] Split - hot/cold [SPL]. Ambient [A]	Glass [G] or Solid [S]	Spring-loaded [S] or Motorized [M]	Front [F] or Rear [R]

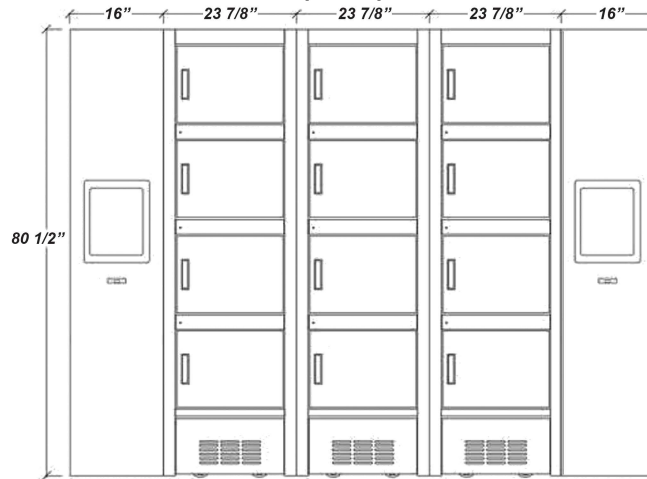
### Example Configuration 1

Module 1 + Module 2 + Module 1  
12x12 [10 -121] CONV-SSF



### Example Configuration 2

Module 3 + Module 1x3 + Module 3  
12x12 [16-31113] CONV-SSF



	Electrical	NEMA	Plug Qty
<b>AI</b> (up to 24 cubes)	115 VAC, 20 amp, Single Phase	5-20P	1 plug per bank
<b>AI</b> (24 to 30 cubes)	115/208-230 VAC, 20 amp, Single Phase	L14-20P	1 plug per bank
<b>CONV</b> (1 column)	115/208-230 VAC, 20 amp, Single Phase	L14-20P	1 plug per column (module 1 or 2)
<b>H or V</b> (1 column)	115/208-230 VAC, 20 amp, Single Phase	L14-20P	1 plug per column (module 1 or 2)
<b>SPL</b> (1 column)	115/208-230 VAC, 20 amp, Single Phase	L14-20P	1 plug per column (module 1 or 2)

#### Internal Compartment Dimensions

Temp Control	Width	Height	Depth (Front Load)	Depth (Pass-thru)
<b>AI</b>	12-3/8"	11-7/8"	21"	23-1/4"
<b>CONV</b>	9-7/8"	11-7/8"	21"	23-1/4"
<b>H</b>	11-1/4"	11-7/8"	21"	23-1/4"
<b>C</b>	11"	11-7/8"	21"	23-1/4"
<b>SPL</b>	Consult Factory			

#### Overall Column Dimensions

Module	Width	Height	Depth	Weight
Module 1	27-7/8"	80-1/2"	28"	350 lbs
Module 2	27-7/8"	80-1/2"	28"	300 lbs
Module 3	16"	80-1/2"	28"	200 lbs

\*Weights are nominal. Depending on options and exact configuration, this may vary.



**Note:**  
Columns with temperature control (hot/cold/convertible) require individual power connections for each column. Ambient insulated and non-insulated require 1 power connection for the entire bank, up to 30 total lockers. The NEMA plugs are provided and will be coming out of the top of the column(s). Each user interface requires and ethernet connection to the internet.

**Warranties:**  
1 year limited parts and labor  
5 year compressor warranty

CALL TOLL FREE: 800-525-3692 (609-714-2330)

FAX: 609-714-2331 [www.rpiindustries.com](http://www.rpiindustries.com)

220 ROUTE 70, MEDFORD, NJ 08055



The ONDO merchandiser is designed for use in stores where ambient temperature and humidity do not exceed 80 Degrees Fahrenheit and 60% R.H. Locker system is designed for holding pre-chilled or pre-heated products within appropriate locker temperature settings.

RPI in line with it's policy to continually improve it's products, reserves the right to change materials and specifications without notice..