

OLYMPUS VI SQUARED AIR SCREEN

PROJECT: _____
ITEM: _____ QUANTITY: _____

MODEL # SCAS-VI-S

SPECIFICATIONS

The Olympus VI Squared Air Screen SCAS-VI-S Series is a grab and go style refrigerator with squared end panels. The self-contained refrigeration system includes digital controls allowing unit to engage in minimal defrost cycles. Unique baffled compressor housing for front air intake, top rear air discharge reducing noise levels, plus zero clearance from wall installation.



Available lengths: 48" 60" 72"

Available depths: 32"

Available heights: 79 1/2"

STANDARD FEATURES

- Self-Contained Refrigeration
- Squared Top Canopy With LED Light
- Smart Controller Electronic Digital Temperature Control and Defrost Termination
- Metal Frame Base Construction with Flush Black Louvered Air Grill For Easy Access To Compressor
- Standard Grade Laminate Exterior
- Black Laminate Interior Ends
- Black Powder Coat Perforated Interior Back Panel
- 4000K LED Top Canopy Light
- 3 Positions Downslant Bracket For Tiltable Shelves
- (4) 17" Adjustable Black Powder Coat Shelves For Maximum Capacity
- Removable Black Powder Coat Pan with Hemmed Edge to Contain Spills
- Red Indicator Light Alerts Operator if Condenser Requires Cleaning
- Unique Internal Baffle Design for Compressor Noise Reduction
- Front Air Intake with Top Rear Air Discharge for Zero Clearance
- Easy Slide-Out Condensing Unit For Service
- 8' Cord and Plug With 20 Amp Plug
- Environmentally Safe Refrigerant
- Black Laminate Back Finish
- Energy Saving Night Curtain
- Flush Concealed Pilaster For Easy Shelf Adjustment
- (4) 2" Independent Casters
- (4) Independent Leg Levelers With Encapsulated Flange Form Nuts
- Hot Gas Condensation With Supplement Heater
- Hot Gas Defrost
- ETL Listed in Accordance with UL 471 and NSF 7 Type II Refrigeration
- 1 Year Parts and Labor Warranty
- 5 Year Compressor Warranty

OPTIONAL FEATURES

- Remote Refrigeration
- Acrylic Product Stop for Stainless Steel Shelving
- Stainless Steel Exterior Finish
 - #4 Brushed #8 Mirrored
- Mirrored Stainless Interior Ends
- Mirrored Interior Back Perforated Rear Panel
- Special Laminate Exterior Finish
- Porte Cachee** Pocket Doors (48" case ONLY)
- Wood Veneer Exterior Finish (Stained & Sealed)
- Front Decorative Panels (remote units only, consult factory)
- Finished Back with Air Grill
 - Stainless Steel Black
- Joining Kit Hardware
- Roll Down Locking Security Cover
- Adjustable legs up to 6"
- 3000K LED Lights Under Shelves & Top Canopy
- 4000K LED Lights Under Shelves
- "Coil Clean" Self Cleaning Condensing Coil Powerful ECM fans mounted on the condenser are run in reverse at 1,400 RPM dislodging particulate matter from condenser coil by pushing unfiltered air back through the coil eliminating manual cleaning. Fans are run during compressor off cycle and are timer controlled for maximum efficiency.
- Smart Door- Motorized door activated by food simulator which automatically closes when product registers above 40°F
- Exterior Laminate Finishes
 - 949-58 White
 - 9244-58 Classic White
 - 459-58 Brite White
 - 7197-58 Dover White
 - 920-58 Almond
 - 927-58 Folkstone
 - 9243-58 Zen Grey
 - 9242-58 Gull Grey
 - 961-58 Fog
 - 756-58 Natural Maple
 - 86992-58 Hard Rock Maple
 - 7012-58 Amber Maple
 - 9237-58 Sand Maple
 - 9238-58 Chelsea Maple
 - 5904-43 Wild Cherry
 - 9240-58 Cherry Hardwood
 - 9236-43 (V4) Noble Mahogany
 - 9300-58 Grey Grafix
 - 8955-43 Cinnamon Cherry
 - 9288-43 (V4) Kona
 - 9374-43 Cocoa Oak
 - 909-58 Black

CALL TOLL FREE: 800-525-3692 (609-714-2330)

FAX: 609-714-2331 www.rpiindustries.com

220 ROUTE 70, MEDFORD, NJ 08055



Conforms to UL Standard 471,
and NSF Standard 7; Certified
To CSA Standard C22.2 No.120

Conforms to NSF STD 7
TYPE II

DOE 2017
Energy Efficiency
Compliant

RPI INDUSTRIES, INC. v6_25_24

OLYMPUS VI SQUARED AIR SCREEN

PROJECT:
TOLL FREE: 800-525-3692

MODEL # SCAS-VI-S

SELF - CONTAINED With Evaporator Pan

| MODEL | L | D | H | HP | VOLT | AMP | PLUG | WT | REFRIG. |
|--------------|----|----|--------|-------|--------------------|-------|---------|------|---------|
| SCAS48R-VI-S | 48 | 32 | 79 1/2 | 1 | 115/208-230 4 wire | 16 | L14-20P | 900 | 448A |
| SCAS60R-VI-S | 60 | 32 | 79 1/2 | 1 1/4 | 115/208-230 4 wire | 17.1 | L14-30P | 1020 | 448A |
| SCAS72R-VI-S | 72 | 32 | 79 1/2 | 1 1/4 | 115/208-230 4 wire | 17.54 | L14-30P | 1150 | 448A |

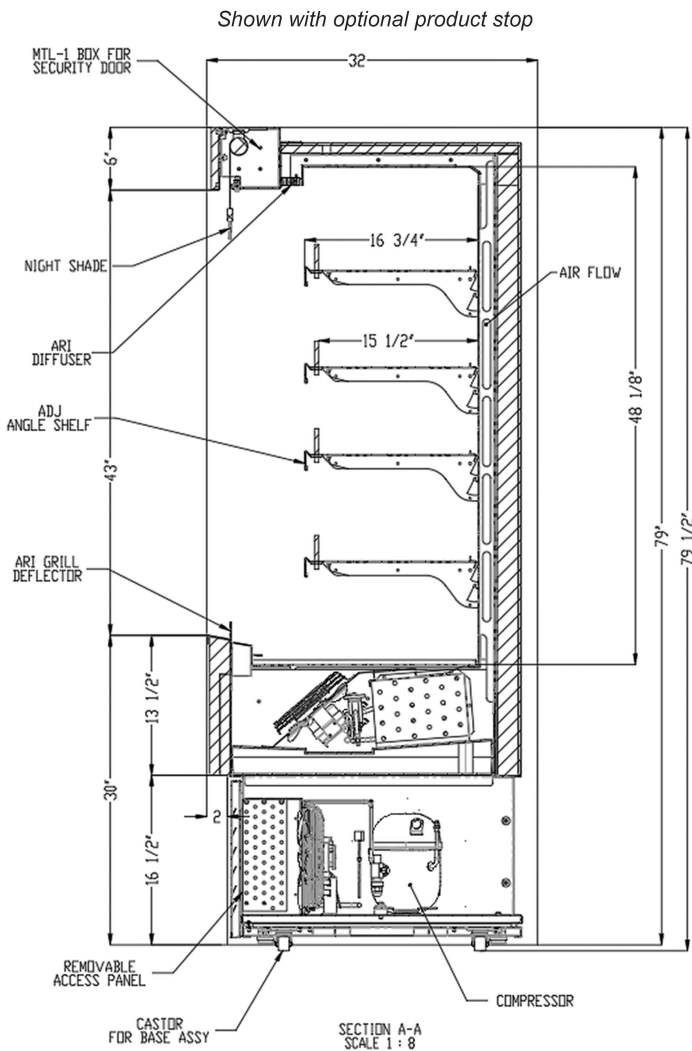
SELF - CONTAINED Water Cooled

| MODEL | L | D | H | BTU | AMP | VOLT | PLUG | WT | REFRIG. |
|-----------------|----|----|--------|-------|-------|--------------|---------|------|---------|
| SCAS48R-VI-S-WC | 48 | 32 | 79 1/2 | 7,470 | 15.46 | 115/208-230V | L14-20P | 900 | 448A |
| SCAS60R-VI-S-WC | 60 | 32 | 79 1/2 | 9,960 | 15.86 | 115/208-230V | L14-30P | 1020 | 448A |
| SCAS72R-VI-S-WC | 72 | 32 | 79 1/2 | 9,960 | 16.3 | 115/208-230V | L14-30P | 1150 | 448A |

NOTE A minimum of 24" unobstructed free air space above unit required for proper ventilation.

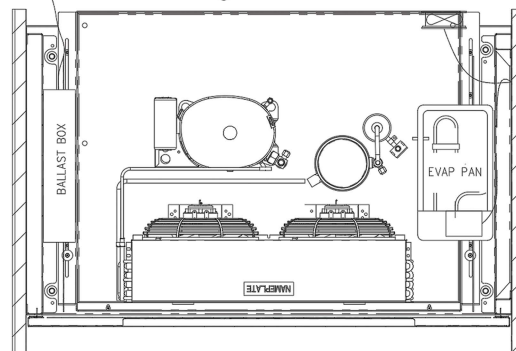
REMOTE - REFRIGERATED With Evaporator Pan

| MODEL | BTUH @ 20°F | VOLT | AMP | PLUG | WT | REFRIG. |
|-----------------|-------------|------|-------|-------|------|---------|
| SCAS48R-VI-S-RR | 7470 | 115 | 10.81 | 5-15P | 800 | Verify |
| SCAS60R-VI-S-RR | 9960 | 115 | 10.81 | 5-15P | 920 | Verify |
| SCAS72R-VI-S-RR | 9960 | 115 | 11.21 | 5-15P | 1050 | Verify |



Electrical & Plumbing locations

8' Cord and Plug



Conforms to UL Standard 471,
and NSF Standard 7; Certified
To CSA Standard C22.2 No.120



RPI refrigerated merchandisers configured for sale for use in the United States meet or surpass the requirements of the DOE 2017 energy efficiency standards

1. Refrigeration System is designed so air will flow front to rear. Unobstructed air flow must be maintained to ensure unit performance and maintain warranty.
2. The SCAS-VI-S merchandiser is designed for use in stores where ambient temperatures and humidity do not exceed 80 Degrees Fahrenheit and 60% R.H. Locate away from direct sunlight, rapid air currents and extreme temperature changes. Exposure to air currents from ceiling fans, air conditioning diffusers, ovens, etc. will disrupt the case air curtain and refrigerated zone. Refrigerated Displays are designed to maintain pre-chilled products. Adding or loading warm products above 41 Degrees Fahrenheit can affect the temperature in the entire cabinet. Any adverse field conditions stated above will void warranty.

RPI in line with its policy to continually improve its products reserves the right to change materials and specifications without notice.

CALL TOLL FREE: 800-525-3692 (609-714-2330)

FAX: 609-714-2331 www.rpiindustries.com

220 ROUTE 70, MEDFORD, NJ 08055

RPI INDUSTRIES, INC. v6_25_24