

### SPECIFICATIONS

Smartflex touchless technology is a patented revolutionary system of front vertical glass panels that activates by motion sensors which can automatically open and close on demand. Intelligence of the system can detect when a person is in front of unit which allows the doors to operate. Smartflex combines the advantages of quick & easy accessibility of doorless display units with the benefit of energy savings; up to 40% less energy consumption vs. open display cases. Automatic doors are silent and as you approach the unit, Smartflex opens quickly and efficiently without any loss of time. Available in a variety of sizes and configurations.

Available lengths: ☐ 39.1" ☐ 51.2" ☐ 76.2"

Available depths: ☐ 33.5"

Available heights: ☐ 80.7"



### STANDARD FEATURES

- Black powder coat interior and exterior
- Electronic controller with display
- High Efficiency top LED canopy lighting
- Glass end panels
- 5 shelves
- 4 adjustable feet
- Adjustable sensor & timer
- Advanced monitoring system
- Equipped with safety mechanism to prevent door closure
- Condensate evaporation Included
- R290 refrigeration system

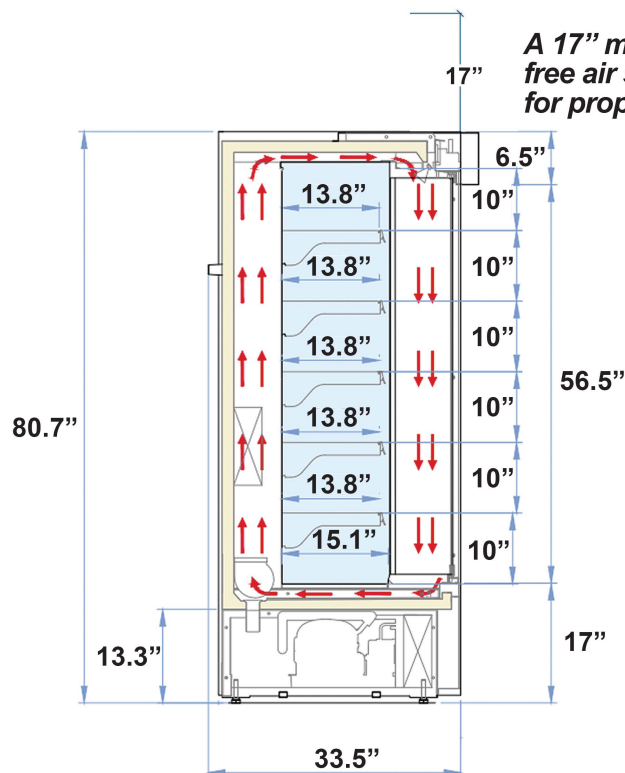
### OPTIONAL ACCESSORIES

- ☐ Interior / exterior / side panels available in stainless steel in lieu of powder coat
- ☐ Additional powder coat colors available (contact factory)
- ☐ Solid side panels in lieu of glass
  - Black powder coat
  - Additional colors available (contact factory)
- ☐ Under-shelf LED lighting
- ☐ Remote version available
- ☐ Casters

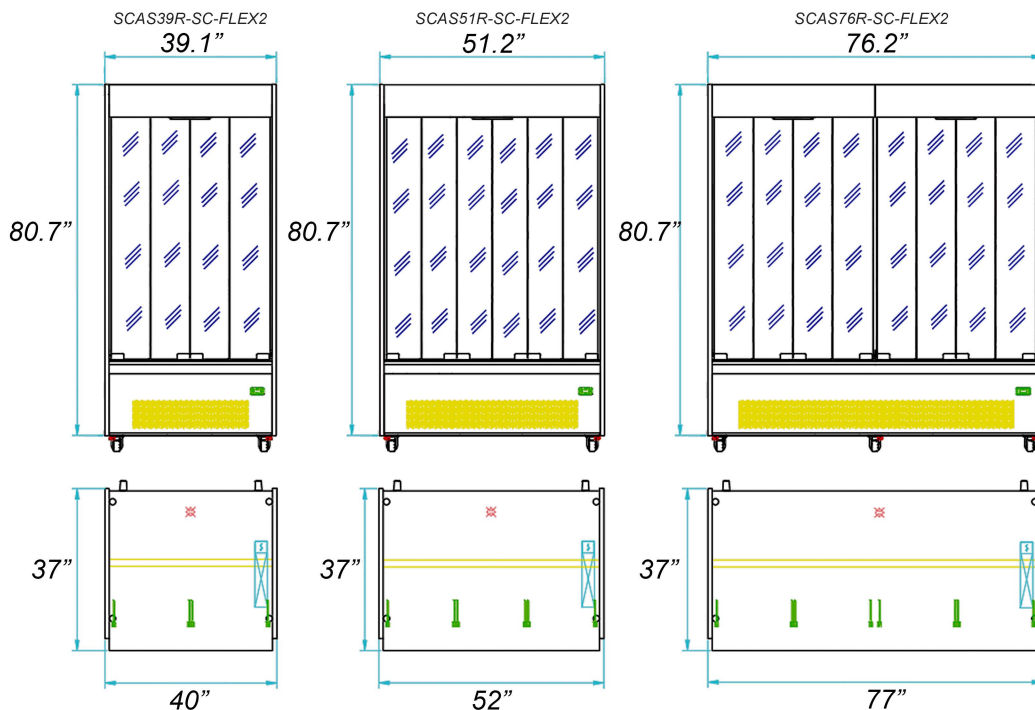
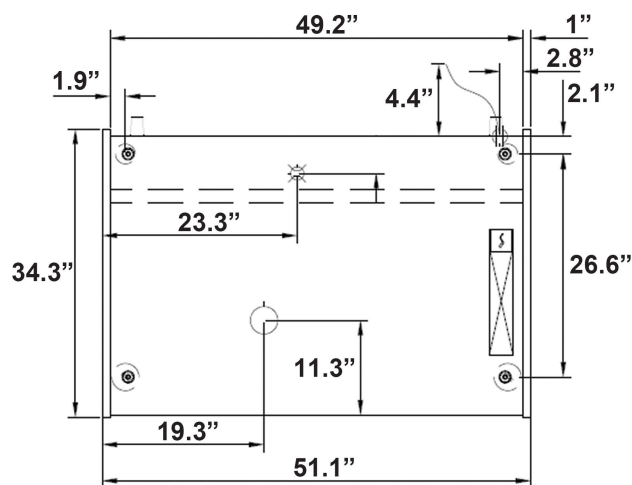
| MODEL            | L     | D     | H     | VOLT | AMPS | WT   | Refrig. |
|------------------|-------|-------|-------|------|------|------|---------|
| SCAS39R-SC-FLEX2 | 39.1" | 33.5" | 80.7" | 230V | 8    | 629  | R290    |
| SCAS51R-SC-FLEX2 | 51.2" | 33.5" | 80.7" | 230V | 8    | 761  | R290    |
| SCAS76R-SC-FLEX2 | 76.2" | 33.5" | 80.7" | 230V | 16   | 1070 | R290    |



Conforms to UL Standard 471,  
and NSF Standard 7; Certified  
To CSA Standard C22.2 No.120



**A 17" minimum of unobstructed free air space needed above unit for proper ventilation**



RPI in line with it's policy to continually improve it's product reserves the right to change materials and specifications without notice.